

The background of the top half of the page is a blue-tinted image of a USHA Pro UPS unit. A circular inset shows a close-up of the network management interface, which includes a 'Power Status' indicator, a '10' port, and a 'COM' port. The text 'USHA Pro' is visible on the device. The overall design features a large, stylized '0' shape that frames the central text.

USHA

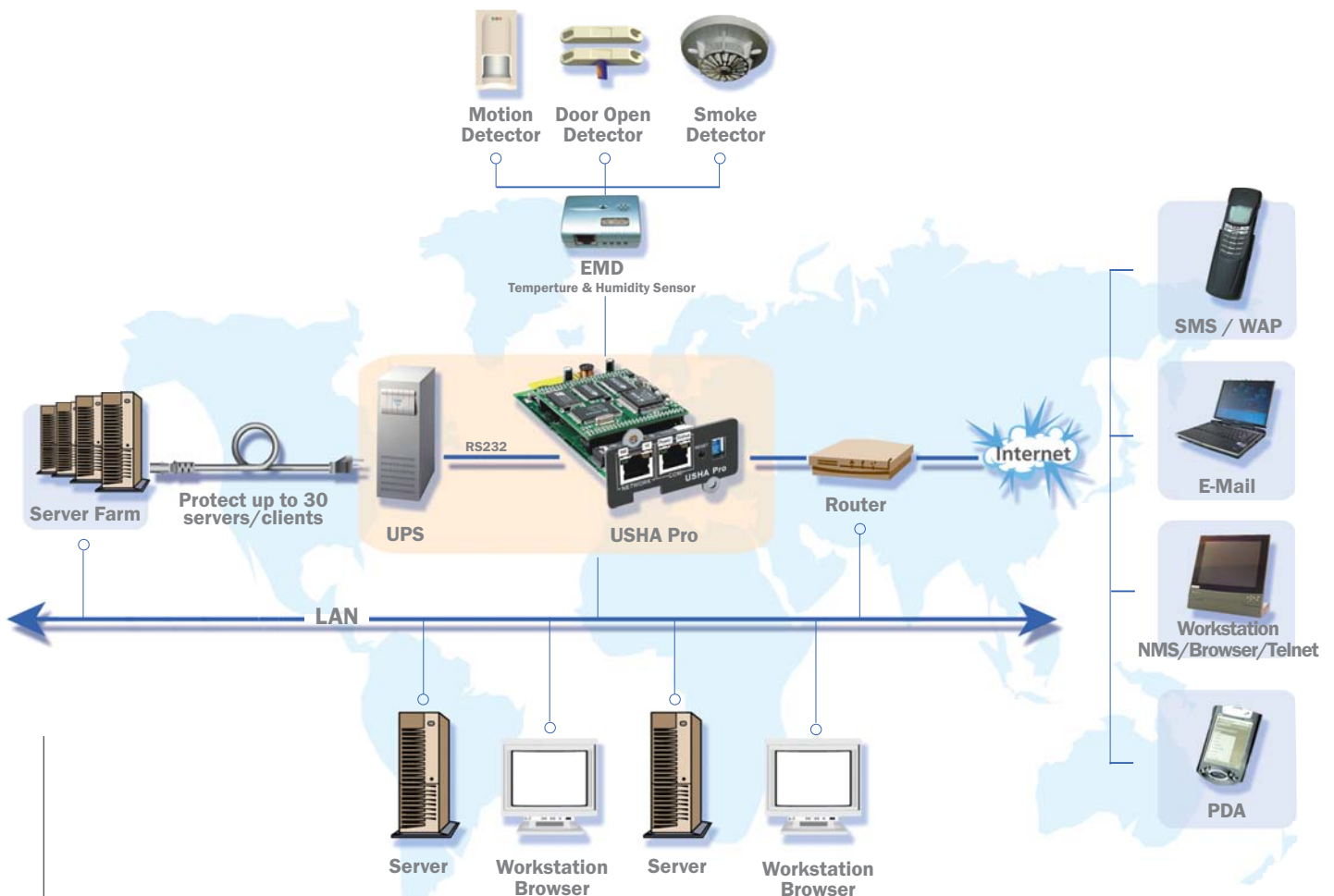
Intelligent Network Management For UPS

USHA — Versatile Provision

- Remote and shareable accessibility
- Centralized and distributed manageability
- Web-based interface usability
- Multiple networking platforms availability
- Various device / protocol driver portability
- Multi-level event alert / log traceability

Advantages :

- Real-time UPS health monitoring
- Comprehensive UPS management and flexible configuration via Web Browser, NMS, Java Applet, Telnet, SNMP, or Hyper Terminal
- Automatic events notification via E-mail, mobile phone (WAP), short message (SMS), SNMP Trap, and PDA
- Graceful shutdown to protect up to 30 servers/workstations from data loss due to power outage.
- Automatically assigned IP via DHCP or BOOTP
- Scheduling shutdown/startup/ reboot of UPS via remote control
- Regularly records UPS parameters for statistical analysis and event diagnostics
- Standard UPS MIB and USHA-proprietary MIB supported
- Auto-sense to works in the 10/100Mbps fast Ethernet network environment
- Configuration utility simplifies the firmware upgrade process
- Quick and easy installation
- Multiple languages supported
- Friendly user interface



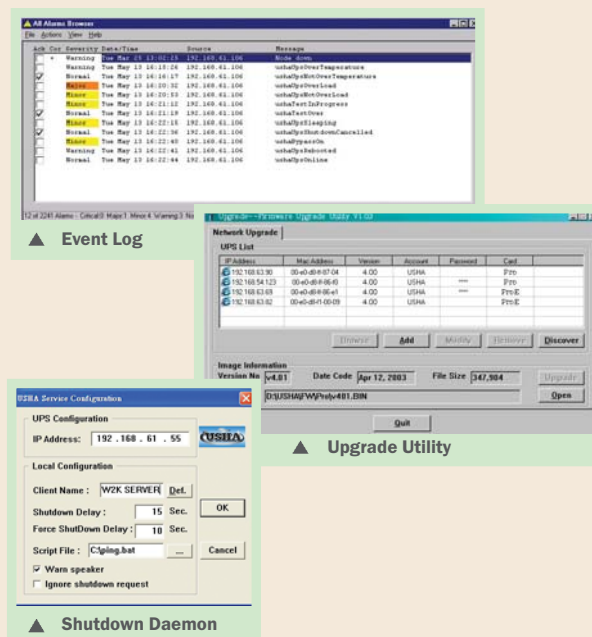
Remote UPS Monitoring and Management



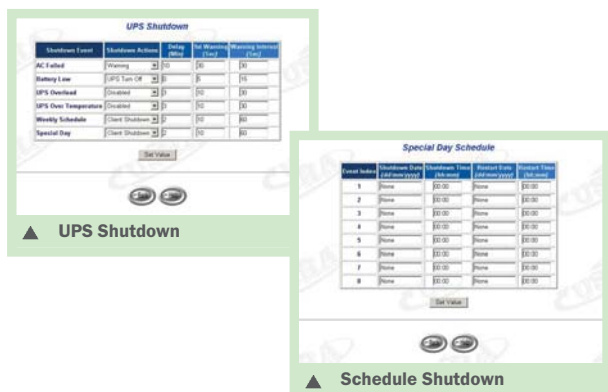
- **HTTP** : Supports HTTP protocol. Remote UPS monitoring and management can be easily done through Web Browsers such as Microsoft Internet Explorer and Netscape.
- **SNMP** : Supports SNMP protocol. Centralized monitoring and management the UPS can be accomplished by a Network Management System such as HP Open View.
- **Java Applet** : Java applet can be launched from within Web Browsers for real-time UPS status monitoring with graphical data.
- **Telnet** : Provides alternative method for configuration of the UPS, which includes automatic log out function for additional security.
- **USHA View** : Designed for simultaneous UPS services monitoring and management.

Proactive UPS Event Handling

- **Event Log** : Automatically records and displays UPS events, warning, and time stamps.
- **UPS Status Notification** :
 1. SNMP : notifies multiple hosts, previously assigned in an SNMP trap table, of UPS status and warning messages.
 2. Java applet : notifies the Administrator of power events with a pop-up dialog box.
 3. Shutdown Daemon : notifies servers/workstations (Max 30) of power events and begins the shutdown procedure. Requires shutdown program to be installed on the servers/workstations
- **E-mail Notification** : Daily routine information and power events can be send through E-mail.
- **Mobile Phone** : With WAP support, administrator can either browse the UPS information or receive the power events short message (SMS) through mobile phone.
- **PDA** : Ability to browse UPS information through PDA



Intelligent shutdown Service



- **User unattended shutdown** : Automatically warns and shuts down UPS and connected devices *on the user-defined schedules or when there is a power event.
 - **User attended shutdown** : Puts UPS to "sleep mode" or turns off/on the UPS.
 - **Safe shutdown operation** : Provides countdown dialog boxes, and safely shuts down servers/workstations when there is a power event.
- * **Connected devices stands for servers/workstations that have installed provided shutdown programs.**

Technical Specification :

CPU	16-bit micro controller
RAM	512Kbyte x 16-bit
Flash ROM	512Kbyte x 16-bit
LAN Interface	Auto-sense 10/100Mbps Fast Ethernet
Serial Port	Two asynchronous serial ports for UPS communication and console communication
SNMP MIB	RFC1213, RFC1268, USHA MIB
Network Protocol	TCP/IP, UDP, SNMP, Telnet, SNTP, HTTP, SMTP
LED	Power, Status, LAN 10/100 Link
Power Input DC	● USHA Pro : 8volt~15volt ● USHA ProE : 12volt unregulated
Power Consumption	3 Watts maximum
Operating Environment	● Temperature : 0°C~40°C ● Humidity : 10~80% non-condensed
Miscellaneous	Real-Time-Clock, Reset button
Language	English, Traditional Chinese, and Simplified Chinese
Firmware Upgrading	● Network Upgrade ● Serial Upgrade (for recovery use)
System Security	Provides IP-based filtering and password protection for system operation and administration
Approvals	CE, FCC Class B
Warranty	Two years

Operating Systems Supported :

- Microsoft Windows 95, 98, NT, 2000, ME, XP
- Novell
- Solaris (x86 version)
- SCO UNIX 5.x
- SCO UnixWare 7.x
- Other Linux-derivative OS

Extension Devices Supported :

- Environmental Monitor Device (EMD)
(Temperature and humidity sensor)
- Motion detector
- Smoke detector
- Door open detector

Ordering Information :

USHA Pro (internal model) : plugs into the expansion slot of UPS

USHA ProE (external model) : communicates with UPS through RS232 cable